

The Astex logo is positioned in the top right corner. It features a stylized white wave symbol followed by the word "astex" in a lowercase, sans-serif font, with a registered trademark symbol (®) to the upper right.

astex®

The title "CATALOGUE 24" is centered on the left side of the page. "CATALOGUE" is in white, uppercase, sans-serif font, and "24" is in a larger, bold, orange, sans-serif font.

CATALOGUE 24

Television | Audio | Navigation | WiFi

The tagline "Designed for your Mobile Life" is located in the bottom right corner. "Designed for your" is in a white, sans-serif font, and "Mobile Life" is in a bold, white, sans-serif font.

Designed for your
Mobile Life

Welcome to CATALOGUE²⁴

Experience

Avtex has been the trusted name for mobile leisure specific audio visual products for over 35 years. Our skilled, dedicated team design our TVs and other associated products specifically for the mobile leisure industry. Over the years we have accumulated a wealth of experience and technical expertise in this narrow sector and have an in-depth understanding of the market and its intricate requirements. Sleek design, high quality componentry, rigorous testing, state of the art technology and cutting edge features are the hallmark of Avtex products.

Avtex products are approved and installed by many leading leisure vehicle manufacturers throughout the world.

Support

Although there are many electrical products available that are loosely stated as suitable for Caravans and Motorhomes use this does not necessarily mean that they were specifically designed for this marketplace. All products supplied by Avtex carry a comprehensive warranty and it is this uncompromising commitment to our high level of after-sales service which has a direct bearing on the products we supply. You can rest assured that any product originating from Avtex has undergone stringent in-house testing by our technical department to evaluate the product's suitability for this unique environment as well as conforming to strict levels of build quality and long-term reliability.

WHY COMPROMISE?



Contents

Why Avtex? -	3 - 4
NEW VIDAA Smart Platform -	5 - 6
Smart TVs - Full HD & FHD Smart TVs	7 - 13
Smart TV-DVD-PVR Combi - Full HD Smart TVs with DVD	14 - 16
Avtex Audio -	17 - 18
Satellite Navigation -	19 - 26
Mobile Internet Solutions -	27 - 31
Carry Cases & Accessories -	32 - 36
Technical Specifications -	37 - 40



Why Avtex?

Avtex televisions are designed from conception for the outdoor leisure industry. Built to the highest specification with market specific features making them suitable for the environment they are used in.

Wirelessly connect via Bluetooth®

Connect wirelessly to your Avtex Sound-Bar and enjoy music or your favourite podcast with crystal clear sound from your paired Bluetooth® device.



AQT - Avtex Quick Tune AQT

Touring involves constantly moving in and out of range of various TV broadcast transmitters. All televisions operating on DVB-T/T2 (terrestrial TV) need to be re-tuned at each new location. Re-tuning can be unnecessarily complicated. All Avtex TVs feature an AQT button that allows the user to switch on the TV, press and hold the big AQT button down for 3 seconds and the tuning process is under way. All available TV and radio channels are tuned and organised in the correct order. Simple.

On-screen battery meter

All Avtex TVs have an on-screen leisure battery meter to allow the user to check the status of the leisure battery from the comfort of an armchair, by simply pressing a single button on the remote control. This feature is not something to be found on a domestic TV or an adapted domestic TV.

Reverse polarity protection

Caravans and motorhomes carry a number of different 12V DC sockets depending on the manufacturer. We always recommend the supplied lead (sometimes called the cigar lighter lead) is used. It is common for some people to use cable adaptors. Problems will arise if customers then connect to their leisure battery and get the polarity wrong. This can cause internal damage to the TV or appliance. All Avtex TVs have circuitry to protect the TV in these circumstances. If the TV is connected with the polarity incorrectly reversed the TV protects itself and refuses to power up. By simply reconnecting with the correct polarity the TV will operate correctly and costly damage is avoided.

Screen Share

Share all those important memories by casting photos, videos and more directly from your Android or iOS device onto your Avtex television.



Protective Aluminium Surround

Full HD Panels

Avtex TVs are built with the highest quality full HD screens producing stunning, crisp and clear images you would expect from a high-quality TV.

Wide Viewing Angles

Avtex TVs have super wide viewing angles and can be mounted and viewed from almost any position providing the whole family with a great view at the same time, wherever they're positioned.



Isolating Switch

Surprisingly, many TVs don't have an isolating switch and just switch to standby via the power button on the remote. All Avtex TVs have a fully isolating ON/OFF switch that isolates the TV from the power source preventing battery drain when not in use.

Removable Aluminium Stand

Avtex TVs have removable stands so they can be wall mounted if required.

Comprehensive 3 year warranty

On all Avtex televisions.

Frameless Design

Avtex's contemporary, sleek and frameless design uses an ultra-slim aluminium surround to provide light weight rigidity and protection resulting in maximum viewing screen size with minimum frame dimensions.

Why Compromise?

NEW

VIDAA SMART PLATFORM

Specifically designed for the Caravan and Motorhome industry

Avtex has partnered with VIDAA to create a Smart platform specifically designed for the Caravan and Motorhome industry. Packaged with mobile leisure vehicle features the new Avtex | VIDAA range is designed for your mobile life.

New Platform, More features ...

Avtex Quick Tune (AQT)



Re-tuning can be unnecessarily complicated. For this reason the Avtex Smart VIDAA Range feature an AQT button that allows the user to switch on the TV, press and hold the AQT button down for 3 seconds and the tuning process is under way. All available TV and radio channels are tuned and organised in the correct order.

On-screen battery meter

All Avtex VIDAA TVs have an on-screen leisure battery meter to allow the user to check the status of the leisure battery from the comfort of an armchair by simply pressing a single button on the remote control. This feature is not something to be found on a domestic TV or an adapted domestic TV.

One Remote - Full Control

Unlike some Smart models in the market Avtex televisions have only one remote making it simple and quick to switch between television, streaming platforms, and DVD player.

Universal Search

Search for content across all our content partner apps, helping you find what you want to watch without wasting your time browsing through each app individually.

Content Recommendations

Whether you are looking for drama, comedy, documentaries or the latest series we've got you!



Designed for your
Mobile Life

VIDAA App

At Avtex we aim to make your viewing experience the best we can. This means ensuring the best quality televisions with the latest technology, software and simplest interfaces for the customer. The VIDAA App allows you full control of your television directly from your smart device.

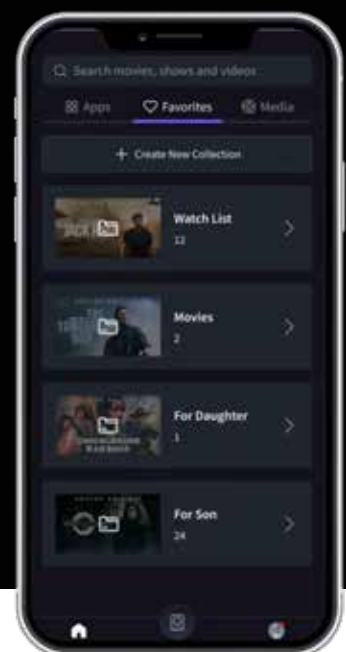
Forgotten your remote? Batteries ran out? No problem! The VIDAA App allows you full control of your television directly from your smart device. Change channel, control your volume, share Music/Video/Photos, turn your device on/off and even do it using the in App Voice control feature!



Keep all your favourite Apps in one place



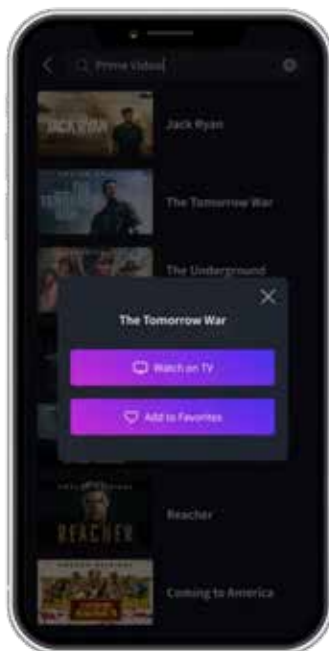
Remote and Voice Control from your device



Create collections of your favourite shows



Share media onto your TV Screen



Search for content



Easy text input for App logins and programme searching

AV195TS

18.5" Smart HD TV



The most compact Smart TV in the Avtex range, the new Avtex AV195TS provides all the benefits of a fully smart television with the external dimensions to fit the smallest of spaces.

The AV195TS is a fully loaded 12/24V DC / 240V Dual tuner Smart television with the latest Avtex | VIDAA mobile Smart platform designed specifically for Caravans and Motorhomes. Overflowing with exciting features and content such as AQT tuning, on-screen battery meter and intelligent power supply. With an internet connection you can discover a whole new world of entertainment from premium streaming services such as Netflix, Amazon Prime, Disney+, YouTube and much more. As well as all the UK catch-up services such as BBC iPlayer, ITVX, All4, My5 with Freeview Play.

Bluetooth® pair to the SB195BT Sound-Bar or Bluetooth® headphones. Even wirelessly cast from your mobile device to the AV195TS, compatible with both Apple (iOS) and Android devices gives you the ability to share photos, movies and musical content. Watch HD TV through your regular aerial or satellite dish without the need for extra equipment.

KEY FEATURES

- 18.5" HD Smart TV with built-in HD satellite decoder
- Avtex | VIDAA mobile Smart platform
- DVB-T & DVB-T2 digital tuner
- DVB-S & DVB-S2 digital HD satellite tuner
- AQT Easy Tuning System
- On-screen battery meter with intelligent power supply
- WiFi®, 2.4 and 5Ghz, built-in for connected services
- Netflix, Amazon Prime, Disney+, iPlayer, ITVX, YouTube, All4 plus much more
- Freeview Play with backwards / forwards EPG
- Bluetooth® connectivity
- Record to external USB or HDD
- Ultra-compact frameless design
- Voice control / App control
- 240V AC / 12V/24V DC
- Comprehensive 3 year warranty

*Some services may require a subscription (sold separately)

W430 x H253 x D45mm Weight
(without stand) 2.08kg (with stand)

W195TS-U

19.5" Smart HD TV



The W195TS-U is a fully loaded 12/24V DC / 240V Smart television filled with exciting features and content.

With an internet connection you can discover a whole new world of entertainment from premium streaming services such as Netflix, Amazon Prime, Disney+, Apple TV, YouTube, and all the UK catch-up services such as iPlayer, ITVX, All4 etc with Freeview Play.

Wirelessly cast from your mobile device to the W195TS-U compatible with both Apple (iOS) and Android devices gives you the ability to share photos, movies and musical content.

Watch Full HD through your regular aerial or satellite dish without the need for extra equipment and now with integrated FreeSat enjoy a full 7-day programme guide on both terrestrial and satellite platforms.

KEY FEATURES

- 19.5" Full HD Smart TV with built-in HD satellite decoder
- Built-in FreeSat satellite decoder with 7-day EPG
- DVB-T & DVB-T2 digital tuner
- DVB-S & DVB-S2 digital HD freesat satellite tuner
- Ultra-compact edge-to-edge design
- WiFi® built-in 2.4 & 5Ghz
- Voice control (optional with magic remote)
- 240V AC / 12V/24V DC
- Freeview Play with forward/backwards EPG
- Comprehensive 3 year warranty

*Some services may require a subscription (sold separately)

W448 x H257 x D46mm
(without stand)

Weight
2.7kg (with stand)

AV215TS

21.5" Smart HD TV



The new Avtex AV215TS is a fully loaded 12/24V DC/240V dual tuner Smart television with the latest Avtex | VIDAA mobile Smart platform designed specifically for Caravans and Motorhomes.

Bristling with features and content, this Smart platform not only provides access to premium streaming services such as Netflix, Amazon Prime, Disney+, YouTube etc and all the catchup services such as iPlayer, ITVX, All4, My5, Freeview Play and much more but it also uniquely offers the market specific features such as AQT, the very convenient easy tuning system and an onscreen leisure battery meter with integrated intelligent power supply features developed by Avtex and perfect for touring.

On board, Bluetooth® offers easy connectivity to external Bluetooth® devices such as the Avtex SB195BT Sound-Bar you can even cast your photos, movies, and music wirelessly from any Android or Apple (iOS) device straight to the AV215TS.

If you go away and forget your remote or the batteries run out, don't worry you can even control your TV with your mobile phone using the VIDAA App. Watch Full HD through your regular aerial or satellite dish without the need for extra equipment.

KEY FEATURES

- 21.5" Full HD Dual tuner Smart TV with built-in HD satellite decoder
- Avtex | VIDAA mobile Smart platform
- DVB-T & DVB-T2 digital tuner
- DVB-S & DVB-S2 digital HD satellite tuner
- AQT Easy Tuning System
- On-screen battery meter with intelligent power supply
- WiFi®, 2.4 and 5Ghz, built-in for connected services
- Netflix, Amazon Prime, Disney+, iPlayer, ITVX, YouTube, All4, My5 plus much more
- Freeview Play with backwards/ forwards EPG
- Bluetooth® connectivity
- Record to external USB or HDD
- Ultra-compact Frameless design
- Voice control /App Control
- 240V AC / 12V/24V DC
- Comprehensive 3-year warranty

*Some services may require a subscription (sold separately)

W488 x H290 x D44mm Weight
(without stand) 2.4kg (with stand)

AV249TS

24" Smart HD TV

avtex | **VIDAA**
The smart platform designed
for your Mobile Life



All the benefits of a 24" screen.

The new Full HD Frameless AV249TS is a fully loaded 12/24V DC / 240V Dual tuner Smart television with the latest Avtex | VIDAA mobile Smart platform designed specifically for Caravans and Motorhomes.

Brimming with exciting features and content. Connect the AV249TS to the internet and discover a whole new world of entertainment from premium streaming services such as Netflix, Amazon Prime, Disney+, YouTube and much more, plus all the UK catch-up services such as BBC iPlayer, ITVX, All4, My5 with Freeview Play.

Pair via Bluetooth® connection to the Avtex SB195BT Sound-Bar to immerse yourself in deep, rich velvety tones (other Bluetooth® enabled devices are compatible). Wirelessly cast from your mobile device to the AV249TS compatible with both Apple (iOS) and Android devices and share photos, movies and musical content. Watch Full HD content through your regular aerial or satellite dish without the need for extra equipment.

KEY FEATURES

- 23.8" Full HD Dual tuner Smart TV with built-in HD satellite decoder
- Avtex | VIDAA mobile Smart platform
- DVB-T & DVB-T2 digital tuner
- DVB-S & DVB-S2 digital HD satellite tuner
- AQT Easy Tuning System
- On-screen battery meter with intelligent power supply
- WiFi®, 2.4 and 5Ghz, built-in for connected services.
- Netflix, Amazon Prime, Disney+, iPlayer, ITVX, YouTube, All4, My5 plus many more
- Freeview Play with backwards/ forwards EPG
- Bluetooth® connectivity
- Record to external USB or HDD
- Ultra-compact frameless design
- Voice control/ app control
- 240V AC / 12V/24V DC operation
- Comprehensive 3 year warranty

*Some services may require a subscription (sold separately)

W540 x H317 x D44mm Weight
(without stand) 2.8kg (with stand)

AV270TS

27" Smart HD TV



The new 27" Full HD ultra-slim Smart TV AV270TS incorporates the latest Avtex | VIDAA mobile Smart platform designed specifically for Caravans and Motorhomes.

This Smart platform not only provides access to premium streaming services such as Netflix, Amazon Prime, Disney+, YouTube all the catchup services such as iPlayer, ITVX, All4, My5, Freeview Play and much more... but it also uniquely offers market-specific features such as AQT the very convenient One Button Tuning System and on-screen leisure battery meter with intelligent power supply features developed by Avtex and perfect for touring.

Bluetooth® offers easy connectivity to external Bluetooth® devices such as the Avtex SB195BT Sound-Bar and you even get the opportunity to share your photos, movies or music wirelessly from any Android or Apple (iOS) device.

If you go away and forget your remote or the batteries run out don't worry you can control your TV with your mobile phone using the VIDAA App!

KEY FEATURES

- 27" Full HD Dual tuner Smart TV with built-in HD satellite decoder
- Avtex | VIDAA mobile Smart platform
- DVB-T & DVB-T2 digital tuner
- DVB-S & DVB-S2 digital HD satellite tuner
- AQT Easy Tuning System
- On-screen battery meter with intelligent power supply
- WiFi®, 2.4 and 5Ghz, built-in for connected services.
- Netflix, Amazon Prime, Disney+, iPlayer, ITVX, YouTube, plus much more
- Freeview Play with backwards/ forwards EPG
- Bluetooth® connectivity
- Record to external USB or HDD
- Ultra-compact edge-to-edge design
- Voice control /App Control
- 240V AC / 12V/24V DC
- Comprehensive 3 year warranty

*Some services may require a subscription (sold separately)

W620 x H364 x D47mm Weight
(without stand) 4.5kg (with stand)

AV320TS

32" Smart HD TV

avtex | **VIDAA**
The smart platform designed
for your Mobile Life



The new Avtex AV320TS fully loaded battery/mains 32" Smart TV with the latest Avtex | VIDAA mobile Smart platform designed specifically for Caravans and Motorhomes.

This Smart platform not only provides access to the premium streaming services such as Netflix, Amazon Prime, Disney+, YouTube, all the catchup services such as iPlayer, ITVX, All4, My5, Freeview Play and much more but it also uniquely offers market-specific features such as AQT the very convenient One Button Tuning System and on-screen leisure battery meter with intelligent power supply features developed by Avtex and perfect for touring.

Wirelessly cast photos and movies from your mobile devices to your Avtex Smart TV to share with your friends (compatible with both Android and Apple (iOS)). The stylish AV320TS is the next level in large-screen mobile entertainment.

KEY FEATURES

- 32" Full HD Dual tuner Smart TV with built-in HD satellite decoder
- Avtex | VIDAA mobile Smart platform
- DVB-T & DVB-T2 digital tuner
- DVB-S & DVB-S2 digital HD satellite tuner
- AQT Easy Tuning System
- On-screen battery meter with intelligent power supply
- WiFi®, 2.4 and 5Ghz, built-in for connected services.
- Netflix, Amazon Prime, Disney+, iPlayer, ITVX, YouTube, plus much more
- Freeview Play with backwards/ forwards EPG
- Bluetooth® connectivity
- Record to external USB or HDD
- Ultra-compact edge-to-edge design
- Voice control /App Control
- 240V AC / 12V/24V DC
- Comprehensive 3 year warranty

*Some services may require a subscription (sold separately)

W721 x H422 x D42mm Weight
(without stand) 5.8kg (with stand)

AV390TS

39.5" Smart HD TV



The ultimate Full HD large screen 12V/24V and 240V Smart television.

The Avtex 39" AV390TS is the ultimate Full HD large screen 12V/24V and 240V Dual tuner Smart television perfect for those people who want the luxury of large screen entertainment in their mobile vehicle. Complete with all the features of the Avtex | VIDAA Smart series this stylish sophisticated 39" operates from both mains and battery and is ideal for both your recreational vehicle and the home. A new standard in mobile entertainment.

KEY FEATURES

- 39.5" Full HD Dual tuner Smart TV with built-in HD satellite decoder
- Avtex | VIDAA mobile Smart platform
- DVB-T & DVB-T2 digital tuner
- DVB-S & DVB-S2 digital HD satellite tuner
- AQT Easy Tuning System
- On-screen battery meter with intelligent power supply
- WiFi®, 2.4 and 5Ghz, built-in for connected services and extra channels
- Netflix, Amazon Prime, Disney+, iPlayer, ITVX, YouTube, plus many more
- Freeview Play with backwards/ forwards EPG
- Bluetooth® connectivity
- Record to external USB or HDD
- Ultra-compact edge-to-edge design
- Voice control /App Control
- 240V AC / 12V/24V DC
- Comprehensive 3 year warranty

*Some services may require a subscription (sold separately)

W881 x H511 x D41mm Weight
(without stand) 9kg (with stand)

SMART TV-DVD-PVR-COMBI

The smart platform is specifically designed for Caravans and Motorhomes

- VIDAA platform specifically designed for the mobile leisure industry
- Integrated DVD Player
- AQT Easy Tuning System
- One simple remote
- VIDAA Voice control /App Control
- On-Screen Battery Meter
- Frameless, ultra-slim design

V219DS

21.5" Full HD Smart TV with integrated DVD player



The new Avtex V219DS has all the benefits of a fully Smart television with the addition of an integrated DVD player.

Our slimmest television range yet offers frameless viewing with external dimensions to fit the smallest of spaces while still maintaining the build quality and robust features associated with the Avtex name.

With an internet connection you can discover a whole new world of entertainment from premium streaming services such as Netflix, Amazon Prime, Disney+, YouTube and all the UK catch-up services such as iPlayer, ITVX, All4 etc with Freeview Play.

Wirelessly cast photos, videos and music from your mobile device directly to your TV. Watch Full HD through your regular aerial or satellite dish without the need for extra equipment.

KEY FEATURES

- 21.5" Full HD Dual tuner Smart TV with built-in HD satellite decoder with DVD Player
- Avtex | VIDAA mobile Smart platform
- DVB-T & DVB-T2 digital tuner
- DVB-S & DVB-S2 digital HD satellite tuner
- AQT Easy Tuning System
- On-screen battery meter with intelligent power supply
- WiFi®, 2.4 and 5Ghz, built-in for connected services
- Netflix, Amazon Prime, Disney+, iPlayer, ITVX, YouTube, All4, My5 plus much more
- Freeview Play with backwards/ forwards EPG
- Bluetooth® connectivity
- Record to external USB or HDD
- Frameless design
- Voice control /App Control
- 240V AC / 12V/24V DC
- Comprehensive 3 year warranty

*Some services may require a subscription (sold separately)

W488 x H290 x D44mm Weight
(without stand) 2.9kg (with stand)

V249DS

23.8" Full HD Smart TV with integrated DVD player



The new Avtex V249DS has all the benefits of a fully Smart television with the addition of an integrated DVD player.

Bristling with features and content this smart platform not only provides access to the premium streaming services such as Netflix, Amazon Prime, Disney+, YouTube and all the catchup services such as iPlayer, ITVX, All4, My5, Freeview Play and much more... but it also uniquely offers market-specific features such as AQT the very convenient Easy Tuning System and an on-screen leisure battery meter with integrated intelligent power supply, features developed by Avtex and perfect for touring.

On-board Bluetooth® offers easy connectivity to external Bluetooth® devices such as the Avtex SB195BT Sound-Bar you can even cast your photos, movies, and music wirelessly from any Android or Apple (iOS) device straight to the V249DS.

If you go away and forget your remote or the batteries run out don't worry you can even control your TV with your mobile phone using the VIDAA App.

KEY FEATURES

- 23.8" Full HD Dual tuner Smart TV with built-in HD satellite decoder with DVD Player
- Avtex | VIDAA mobile Smart platform
- DVB-T & DVB-T2 digital tuner
- DVB-S & DVB-S2 digital HD satellite tuner
- AQT Easy Tuning System
- On-screen battery meter with intelligent power supply
- WiFi®, 2.4 and 5Ghz, built-in for connected services
- Netflix, Amazon Prime, Disney+, iPlayer, ITVX, YouTube, All4, My5 plus much more
- Freeview Play with backwards/ forwards EPG
- Bluetooth® connectivity
- Record to external USB or HDD
- Frameless design
- Voice control /App Control
- 240V AC / 12V/24V DC
- Comprehensive 3 year warranty

*Some services may require a subscription (sold separately)

W540 x H317 x D44mm Weight
(without stand) 3.36kg (with stand)

AUDIO

stex

Immerse yourself

THE COMPLETE SOLUTION

All-In-One TV Sound-Bar & Bluetooth® Speaker System

SB195BT SOUND-BAR

The SB195BT comes complete with a bracket so it can be attached to the latest Avtex TVs for wall mounting. Simply remove the TV stand (as it is not required when wall mounting) and use the same two holes that the stand uses to attach the bracket and Sound-Bar. Simple. For other makes of TV or older Avtex models consult your retailer regarding a mounting solution.



KEY FEATURES

- Bluetooth® wireless music streaming
- Ultra-compact design
- Four speaker driver system
- Superior tonal range for crisp, clear sound
- Simple set-up
- USB Playback
- HDMI Arc
- Coaxial audio in
- Aux in
- EQ settings
- 240V AC / 12V/24V DC
- Power Output: 2 x 10W
- Power Consumption: 12v - 0.75A / 24v - 0.42A

SB195BT SOUND-BAR

W436 x H46 x D68mm
(without stand)

Weight
1.2kg

Satellite Navigation

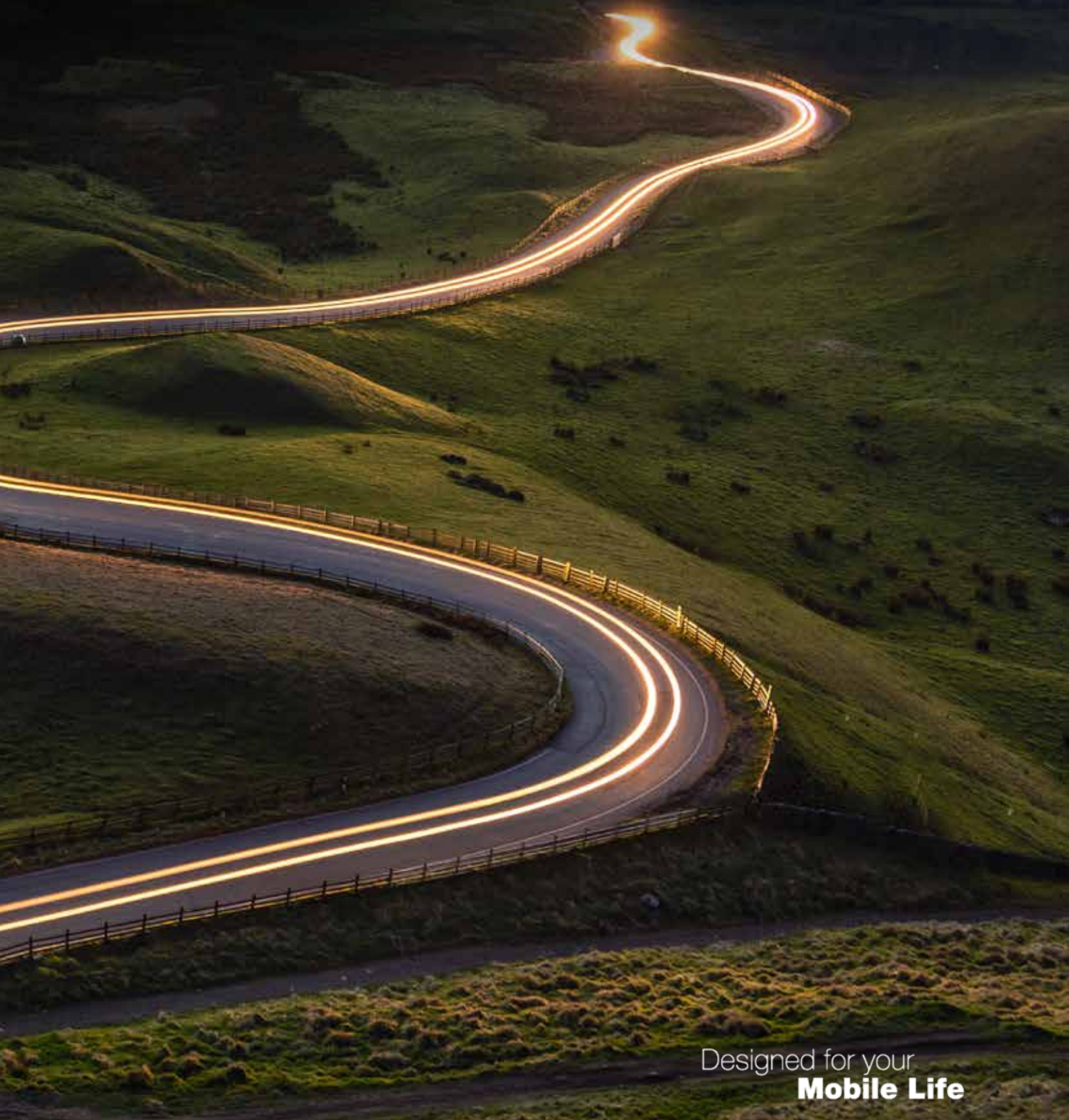
Navigation for Caravans and Motorhomes.
Following a collaboration between Avtex and
satellite navigation leaders Garmin a range of
Caravan and Motorhome satellite navigation
products are now available.



Powered by

GARMIN®

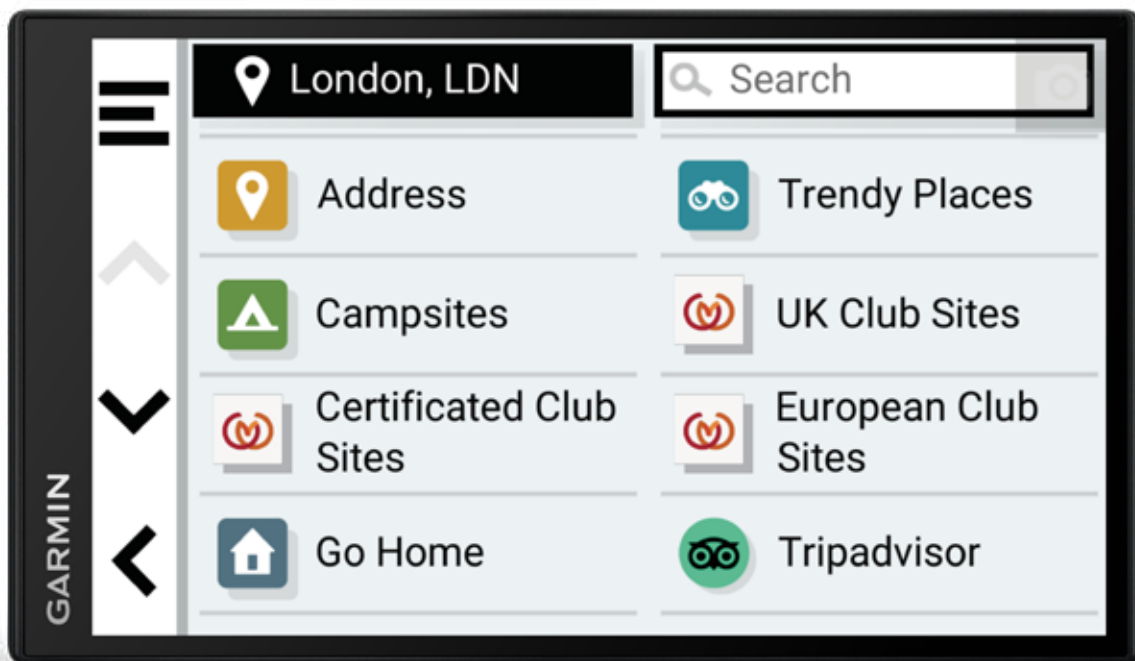
astex®



Designed for your
Mobile Life

Tourer Three

Navigation for Caravans and Motorhomes



The Avtex Tourer Three

comes packed with features specifically for use with Caravans and Motorhomes. Simply enter the size and weight of your motorhome or towing outfit and the Avtex Tourer Three will guide you to your destination avoiding height, width, and weight-restricted roads whilst providing you with route warnings such as sharp bends or steep hills along the way. The Avtex Tourer Three will even suggest places you might want to visit en route and will also inform you of traffic jams and offer alternate routes when available. Once you arrive at your destination you can use BirdsEye imagery to assist you in navigating right to your pitch!

The Avtex Tourer range provides exclusive access to The Caravan and Motorhome Club campsite database which allows you to accurately search, filter and view all the Club campsites. In addition to the Club campsites locations the full ACSI, Trailer's Park, Campercontact and Michelin®. Green Guide databases are pre-loaded to name but a few. This comprehensive listing of campgrounds contains thousands of sites in the UK and Europe with Tripadvisor® ratings!

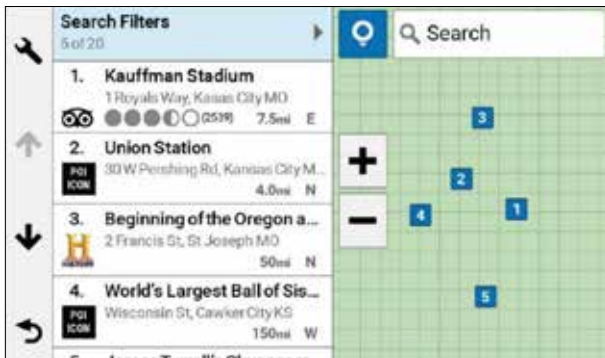
The Avtex Tourer Three can be easily kept up to date for all your journeys with FREE map updates for the UK and Europe included.



SATELLITE NAVIGATION

KEY FEATURES

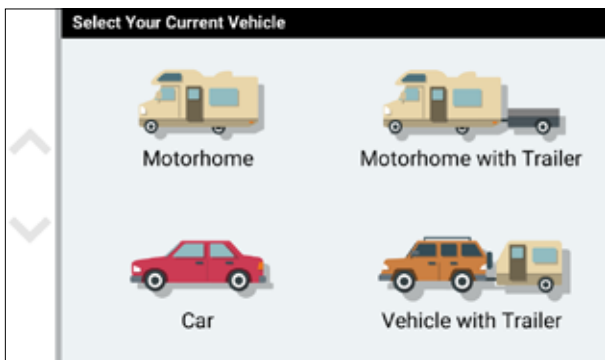
- 6.95" (17.7cm) HD display guides you to your destination with a pinch-to-zoom, capacitive glass display
- Caravan and Motorhome Vehicle Profile shows speed limits, height restrictions and driver alerts
- New - Easily plan arrival to your desired destination using BirdsEye Satellite Imagery to show you where to go
- New - Trendy Places, Local Spots and Scenic Routing features help inform you of places that are worth a visit
- New - Environmental Zone routing
- Exclusive Caravan and Motorhome Club campsites databases
- Extensive European Caravan and Motorhome site databases
- Map updates included via PC, Mac, or WiFi®
- Road Warnings, Elevation Profile and Driver Alerts
- Hands-free features include Bluetooth® calling, smart notifications and voice-activated navigation
- Road trip-ready with Tripadvisor® Traveller Ratings and points of interest (POIs)
- Wireless Backup Camera compatible (not included)



Trendy Places Locator



BirdsEye Satellite Imagery



Caravan and Motorhome Profile



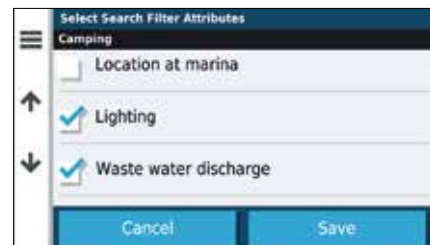
The Caravan and Motorhome Club Directory



Free Map Updates



Live Traffic (DAB or smartphone)



Filter sites by amenities

*Some services may require a subscription (sold separately)

W170 x H99 x D14mm Weight
(without stand) 251g

Tourer Three PLUS

Navigation for Caravans and Motorhomes



Featuring a 7-inch colour TFT touchscreen, built-in 1080p HD dash cam and exclusive access to the Caravan and Motorhome Club campsite data the new Avtex Tourer Three PLUS is perfect for use with Caravans and Motorhomes.

Simply enter your vehicle size and weight and the Avtex Tourer Three PLUS will guide you to your destination avoiding height, width, and weight-restricted roads whilst providing you with route warnings such as sharp bends or steep hills along the way. In case of an accident the Avtex Tourer Three PLUS will continuously record and save videos of detected incidents throughout your journey. Upon your arrival BirdsEye Satellite Imagery makes arrival planning easy with aerial photographs of the motorhome park or campsite assisting you right to your pitch!

The Avtex Tourer range provides exclusive access to the Caravan and Motorhome Club campsite database allowing you to accurately search, filter and view all the Club campsites. In addition to the Club's campsites locations, the full ACSI, Trailer's Park, Campercontact and Michelin® Green Guide databases are pre-loaded to name but a few. This comprehensive listing of campgrounds contains thousands of sites in the UK and Europe with Tripadvisor® ratings!

The Avtex Tourer Three PLUS can be easily kept up to date for all your journeys with FREE map updates for the UK and Europe included.

SATELLITE NAVIGATION





Integrated 1080p
dash camera



Built-in 1080p HD dash cam

The Avtex Tourer Three PLUS includes a dash cam for recording events in the road ahead. The built-in dash cam records at 1080p HD and up to 30FPS (Frames Per Second) with a 140-degree (diagonal) field of view. Optional GPS overlay records GPS location, speed, date and time. This is useful information as it provides recorded evidence of where and when an incident occurred. Furthermore, incident detection (G-sensor) automatically saves footage on impact. You can also manually save footage with a touch of a button.



KEY FEATURES

- 6.95" (17.7cm) HD Display guides you to your destination with a pinch-to-zoom, capacitive glass display
- Built-in 1080p HD dash cam
- Caravan and Motorhome Vehicle Profile shows speed limits, height restrictions and driver alerts
- New - Easily plan arrival to your desired destination using BirdsEye Satellite Imagery to show you where to go
- New - Trendy Places, Local Spots and Scenic Routing features help inform you of places that are worth checking out
- New - Environmental Zone routing
- Exclusive Caravan and Motorhome Club campsite databases
- Extensive European Caravan and Motorhome site databases
- Map updates included via PC, Mac, or WiFi®
- Road Warnings, Elevation Profile and Driver Alerts
- Hands-free features include Bluetooth® calling, smart notifications and voice-activated navigation
- Road trip-ready with Tripadvisor® Traveller Ratings and points of interest (POIs)
- 16GB microSD card
- Simple Mount Solution (non-powered/non-magnetic)
- Integrated Driving Recorder Interface (Save/Take Pictures)
- Garmin Vault Video Cloud Storage
- On-Device Video Gallery for reviewing and managing footage
- Driver Alerts: Forward Collisions and Lane Departures
- Wireless Backup Camera compatible (not included)

*Some services may require subscription (sold separately)

W175 x H105 x D35mm Weight
(without stand) 251g

Reversing Cameras

For added visual awareness Avtex has teamed with Garmin to offer a range of wireless reversing cameras. All cameras offer a wide and clear video image of the rear of your vehicle making reversing your caravan or motorhome easier and safer.

Simply put your car into reverse and a display screen on your Tourer sat nav will show a wide field of view behind your vehicle. The rugged weather-resistant design of all cameras can withstand rain, snow and harsh road conditions. This teamed with the ability to wirelessly connect to your sat nav with a distance of up to 50 feet (15 meters) makes these cameras perfect for the mobile leisure industry.

Powered by
GARMIN.



BC40

Wireless Reversing Camera



The BC40 is compatible with Avtex Tourer One and Tourer Two sat nav

- A truly wireless back-up camera uses 2 x AA batteries (lithium recommended)
- Flexible screw-mounting solution for the rear of your vehicle
- Displays the BC40 camera view on your compatible sat nav display
- Provides a wide, clear video image of what's behind your vehicle
- Rugged and weatherproof (water-rated to IPX7) to withstand various road conditions
- Voice commands can initiate the camera view when paired to a compatible sat nav

No wiring. We eliminated the hassle of wiring this camera into your car's power supply. Just install 2 x AA batteries (lithium recommended) and the BC40 is ready to go.

REVERSING CAMERA

BC50

Wireless Reversing Camera

Reverse with confidence with the BC50 even when manoeuvring a long motorhome or towing a caravan. With HD resolution and a wide 160 degree field of view this camera helps you see clearly what's behind your vehicle. Whether you're backing a trailer down the boat ramp, parking your camper in that tight spot or reversing your caravan into a pitch, the long 15m transmission range lets you see exactly where you're going from your compatible sat nav. With a software update, Garmin BC50 is compatible with a variety of navigation devices to help drivers of all vehicle types reverse with confidence, including the Avtex Tourer Three and Tourer Three Plus sat navs as well as Garmin Drive Smart sat navs and Garmin Tread rugged all-terrain sat navs. The rugged weather-resistant design can withstand rain, snow and harsh road conditions.

- Up to 720p sharp HD resolution
- 160 degrees field of view
- Up to 50 feet (15m) wireless transmission distance
- 12V/24V DC power source
- Rugged and compact design
- IPX67 weather-resistant housing
- Ability to connect the camera to your vehicle's reverse lights (professional installation recommended).



W25 x H21.8 x D17 MM Weight
(Camera Only) 37.4g (Camera Only)

BC50IR

Wireless Reversing Camera with night vision

Reverse with confidence, even when manoeuvring longer vehicles or a caravan. NightGlo technology illuminates what matters behind your vehicle for exceptional visibility in dark settings. Whether you're parking your motorhome in that perfect space or reversing your camper onto your driveway, the HD resolution and a wide field of view help you see what's behind your vehicle. It provides a long 15m transmission range and pairs wirelessly with your compatible Avtex sat nav. With a software update, Garmin BC50IR is compatible with a variety of navigation devices to help drivers of all vehicle types reverse with confidence including Garmin, Camper sat navs, DriveSmart sat navs and Garmin Tread rugged all-terrain sat navs. The rugged weather-resistant design can withstand rain, snow and harsh road conditions.

- Exterior night vision
- Up to 720p sharp HD resolution
- 160 degrees field of view
- Up to 50 feet (15m) wireless transmission distance
- 12V/24V DC power source
- Rugged and compact design
- IPX67 weather-resistant housing
- Ability to connect the camera to your vehicle's reverse lights (professional installation recommended).



W25 x H21.8 x D17 MM Weight
(Camera Only) 37.4g (Camera Only)

REVERSING CAMERA



astex[®]

Mobile Internet Solutions



Designed for your
Mobile Life

AMR994X

4G Mobile Internet Solution

Dual Sim Router



Stream Browse Share with the brand new Avtex AMR994X router and 5G compatible antenna package. The antenna utilises the latest technology to fully support 3G, 4G and 5G, whilst the AMR994X router supports two unlocked SIM cards to maximise coverage and minimise roaming costs.

Connect up to 100 devices with download speeds up to 150Mbps, 5x ethernet ports for wired connection.

KEY FEATURES

Router

- 4G LTE Cat 4 with speeds up to 150 Mbps
- Wireless access point with Hotspot functionality
- Dual SIM ensures coverage and reduces roaming cost
- Connect to existing WiFi® network to reduce data cost
- WAN failover - automatic switch to available backup connection
- 5 x ethernet ports
- 12V / 24V/ mains operation
- E-mark certified for automotive installation

Antenna

- 3G/4G/5G compatible antenna
- Low profile Omnidirectional MIMO antenna
- High Gain
- Works in motion or stationary

STREAM | BROWSE | SHARE
WHEREVER YOU ARE.



NEW AMR104X

4G Mobile Internet Solution

Dual sim superfast CAT 6 router package



Stream Browse Share with the brand new Avtex AMR104X superfast Category 6 router and 4 element antenna package. Designed specifically for the leisure market the AMR104X has a 2.8" colour screen so you can easily monitor your router's status and view information such as signal strength, service provider, even monthly data usage. Our Dual Sim Router is fully unlocked to any network and even allows the user to toggle between LTE and Wi-Fi when available to minimise roaming costs. The antenna utilises the latest technology to fully support 3G, 4G and 5G. The AMR104X has a DC isolation switch to provide the option to power off the router when not in use to minimise battery consumption.

KEY FEATURES

Router

- 4G Category 6 LTE mobile router typically up to twice the speed of a standard CAT 4 device with speeds up to 300Mbps
- Fast reliable internet access suitable for streaming & browsing
- Dual SIM ensures coverage and reduces roaming cost
- Connect to existing Wi-Fi network to reduce data cost
- 2.8" LED colour display
- DC on/off isolating switch
- Connect multiple simultaneously
- Remote management System Support
- Easy installation mounting solution
- 12V / 24V
- Mains adapter optional (not included)
- E-mark certified for automotive installations

Antenna

- High Gain 4 Element antenna
- 3G/4G/5G compatible antenna
- Low profile omnidirectional MiMo antenna
- Works in motion or stationary Router
- Available in three colours



NEW AMR105X

5G Wi-Fi 6 Mobile Internet Solution

Ultrafast Dual Sim Router

5G



Stream Browse Share with the new high speed Avtex AMR105X 5G Wi-Fi 6 mobile router and 5G compatible antenna package. Designed specifically for the Leisure market the AMR105X has a 2.8" colour screen so you can easily monitor your router's status, view information such as signal strength, service provider even monthly data usage, our Dual Sim Router is fully unlocked to any network and even allows the user to toggle between LTE and Wi-Fi when available to minimise roaming costs. The antenna utilises the latest technology to fully support 3G, 4G and 5G. The AMR105X has a DC isolation switch to provide the option to power off the router when not in use to minimise battery consumption.

KEY FEATURES

Router

- 3G/4G/5G cellular connections
- 2.8" LED Colour display
- Toggle between LTE/WIFI
- Security : WPA, WPA2, WPA3
- Operates on both 5Ghz and 2.4Ghz
- 2x Gigabit Ethernet Ports
- Fast reliable internet access suitable for Streaming & Browsing
- Dual SIM ensures coverage and reduces roaming cost
- Connect to existing Wi-Fi network to reduce data cost
- Easy installation mounting solution
- DC on/off isolating switch
- 12V / 24V
- Mains adapter optional (not included)
- E-mark certified for automotive installations.

Antenna

- High Gain 4 Element antenna
- 3G/4G/5G compatible antenna
- Low profile omnidirectional MIMO antenna
- Works in motion or stationery Router
- Available in three colours



Protective Carry Cases & Accessories



TV CARRY CASES

16", 18.5", 19.5", 21.5" & 24" Carry cases



Specifically designed

to carry and protect the 16", 18.5", 19.5", 21.5" and 24" LED TV / DVD combinations in the range. They have separate compartments to house all of the accessories; leads that accompany the screens; room for the Avtex (SB195BT) Sound-Bar.

SAT NAV CARRY CASE

AV770BG SAT NAV Carry case

A high quality carry case specifically made to carry and protect the Avtex 660 Camper Premium, Tourer One, Tourer One Plus, Tourer Two, Tourer Three and Tourer Three Plus Sat Navs.

Specifications

- Tough, durable, hard outer shell
- Additional compartment for car charger
- Internal padding for extra protection



CARRY CASES

STH4000

STH4000 boosted antenna with LTE filtering

The STH4000 boosted antenna with LTE filtering is designed specifically for use with digital televisions. It is light weight, compact and very easy to use. With its unique flexible mounting system it can be installed indoors or outdoors in seconds. The integrated amplifier can be powered by the antenna power out function found on most set top boxes and Avtex digital televisions.



ANPS104

Antenna

The Avtex ANPS104 is the perfect solution for low signal strength areas or for boosting the signal to up to four separate TV locations. The Avtex ANPS104 amplifier operates on 12V DC designed for use in caravans or motorhomes.

Key Features

- Low noise amplifier technology
- 1 input and 4 outputs
- High 12 dB Gain
- 12V DC power – lead supplied
- LED AMPLIFIER power on indicator

MOUNTING SOLUTIONS

In today's style conscious world many of our decisions are design led. So when choosing a flat panel TV wall mount a well designed, space saving solution is very important. Our range of quick release mounting solutions are very simple yet highly functional. Most brackets can swivel and tilt (amounts vary by model, please see specifications below) and incorporate a quick release function allowing you to mount and remove your television from the bracket quickly and easily. A great feature for security and for those on the move.

SV5

Flat To Wall Mounting Solution



The SV5 Quick Release Wall Mount is a secure mounting point for your flat screen television. The mount includes fittings to mount screens with 50 x 50mm, 75 x 75mm or 100 x 100mm VESA mount points, and supports 10" to 24" screens up to 25Kgs.

SPECIFICATION

- Max support: 25kg
- Screen size: 10"-24" (25.5cm – 70cm)
- Quick release feature
- VESA Compatible: 50/75/100mm
- In silver

AK12TM

Lockable Aluminium in motion RV TV mount



The AK12TM is a high quality VESA mounting solution made of lightweight aluminium, designed specifically for the mobile leisure industry. The AK12TM has a simple but clever locking system which allows you to secure the bracket in an instant ready for when you are on the move! The double arm and tilt action provide maximum flexibility giving you the opportunity to adjust the viewing angle of your TV to its optimum.

SPECIFICATION

- Lockable aluminium full-motion RV TV mount
- Max support 15kg
- Screen size 10"-32"
- Swivel +/-90
- Tilt +/- 55-45
- Detachable VESA plate design
- Stepped joints prevents in-transit vibration
- Lockable design resists arm-shaking and noise
- Free-tilting and swiveling for multiple viewing angles
- Cable management system
- In silver

AK85TM

In Motion Single Arm Mounting Solution



The AK85TM is a high quality VESA mounting solution made of lightweight aluminium designed specifically for the mobile leisure industry.

The single arm and tilt action provide maximum flexibility giving you the opportunity to adjust the viewing angle of your TV to its optimum. The convenient quick release design also allows you to remove your TV in seconds and relocate it for maximum security.

AK86TM

In Motion Double Arm Mounting Solution



The AK86TM is a high quality VESA mounting solution made of lightweight aluminium designed specifically for the mobile leisure industry. The AK86TM has a simple but clever locking system which allows you to secure the bracket in an instant, ready for when you are on the move! The double arm and tilt action provide maximum flexibility giving you the opportunity to adjust the viewing angle of your TV to its optimum. The convenient quick release design also allows you to remove your TV in seconds and relocate it for maximum security.

AK87TM

In Motion Triple Arm Mounting Solution



The AK87TM is a high quality VESA mounting solution made of lightweight aluminium designed specifically for the mobile leisure industry. The AK87TM has a simple but clever locking system which allows you to secure the bracket in an instant, ready for when you are on the move! The triple arm and tilt action provide maximum flexibility giving you the opportunity to adjust the viewing angle of your TV to its optimum. The convenient quick release design also allows you to remove your TV in seconds and relocate it for maximum security.

Technical Specification Sheets

Avtex Technical Support Team

02920 847670
service@avtex.co.uk

Specifications

Satellite Navigation - Tourer Range

Model	Tourer Three	Tourer Three Plus
Screen size	6.95"	6.95"
BirdsEye Satellite Imagery	•	•
Trendy Places Locator	•	•
Environmental Zone Routing	•	•
Vehicle Profiling	•	•
Caravan and Motorhome Club Data Base	•	•
European Caravan and Motorhome Site Data Base	•	•
Map Updates	•	•
Digital Traffic	•	•
Road Warnings	•	•
Elevator Profile	•	•
Driver Alerts	•	•
Bluetooth® Calling	•	•
Smart Notifications	•	•
Voice Activated Navigation	•	•
TripAdvisor® Traveller Ratings	•	•
Foursquare® Points of Interest	•	•
Michelin Green Guide	•	•
Wireless Backup Camera Compatible (Not Included)	•	•
Integrated 1080p dash cam based on Dash Cam Mini 2		•
16GB microSD card		•
Simple Mount Solution (non-powered/non-magnetic)	•	•
Integrated Driving Recorder Interface (Save/Take pictures)		•
Garmin Vault Video Cloud Storage		•
On-device Video Gallery for reviewing and managing footage		•
Driver Alerts: Forward Collisions and Lane Departure		•

Specifications

Television Range

	VIDAA Smart Series					
Model	AV195TS	AV215TS	AV249TS	AV270TS	AV320TS	AV390TS
Screen size	18.5"	21.5"	23.8"	27"	32"	39.5"
Widescreen Format	•	•	•	•	•	•
LED display	•	•	•	•	•	•
Full /HD Display resolution	1366 x 768	1920 x 1080	1920 x 1080	1920 x 1080	1920 x 1080	1920 x 1080
Viewing angle H / V	178 / 178	178 / 178	178 / 178	178 / 178	178 / 178	178 / 178
DVBS-S2 HD Satellite decoder	•	•	•	•	•	•
DVBT-T2 HD through aerial	•	•	•	•	•	•
freesat with EPG						
Free to air satellite	•	•	•	•	•	•
Freeview Play	•	•	•	•	•	•
WiFi connected	•	•	•	•	•	•
Bluetooth	•	•	•	•	•	•
Fast scan	•	•	•	•	•	•
Smart services Netflix etc	•	•	•	•	•	•
Ethernet connected	•	•	•	•	•	•
Magic Remote with voice control (optional Extra)						
DVD						
CD						
AQT	•	•	•	•	•	•
CI Slot	•	•	•	•	•	•
Multi Channel Watch & Record						
Pause / Playback	•	•	•	•	•	•
Instant record to USB	•	•	•	•	•	•
Instant record to HDD	•	•	•	•	•	•
Timer record from programme guide (EPG)	•	•	•	•	•	•
HDMI	x3	x3	x3	x3	x3	x3
HDMI ARC	•	•	•	•	•	•
Coaxial Audio Output						
Optical Audio Output	•	•	•	•	•	•
USB	x2	x2	x2	x2	x2	x2
Headphone socket	•	•	•	•	•	•
Mini AV input	•	•	•	•	•	•
RCA input						
Wall mounted VESA 100mm x 100mm	•	•	•	•	•	•
On / Off switch	•	•	•	•	•	•
240v operation	•	•	•	•	•	•
12v operation	•	•	•	•	•	•
24v operation	•	•	•	•	•	•
Weight (with stand)	2.08Kg	2.4 kg	2.8 kg	4.5 kg	5.8 kg	9kg
Dimensions (w / h / d) mm (without stand)	430 x 253 x 45 mm	488.8 x 290 x 44 mm	540.4 x 317.6 x 44 mm	620 x 364 x 47 mm	721 x 422 x 42 mm	881 x 511 x 41 mm
Dimensions (w / h / d) mm (with stand)	430 x 280 x 45 mm	488.8 x 311 x 44 mm	540.4 x 338.6 x 44 mm	620 x 414 x 47 mm	721 x 472 x 42 mm	881 x 591 x 41 mm
Remote control / power / cables / instructions	•	•	•	•	•	•
Finish	Black	Black	Black	Black	Black	Black

Specifications

Television Range

	Smart TV Series	VIDAA Smart TV-DVD Series	
Model	W195TS-U	V219DS	V249DS
Screen size	19.5"	21.5"	23.8"
Widescreen Format	•	•	•
LED display	•	•	•
Full /HD Display resolution	1920 x 1080	1920 x 1080	1920 x 1080
Viewing angle H / V	178 / 178	178 / 178	178 / 178
DVBS-S2 HD Satellite decoder	•	•	•
DVBT-T2 HD through aerial	•	•	•
freesat with EPG	•		
Free to air satellite	•	•	•
Freeview Play	•	•	•
WiFi connected	•	•	•
Bluetooth	•	•	•
Fast scan	•	•	•
Smart services Netflix etc..	•	•	•
Ethernet connected	•	•	•
Magic Remote with voice control (optional Extra)	•		
DVD		•	•
CD		•	•
AQT		•	•
CI Slot	•	•	•
Multi Channel Watch & Record			
Pause / Playback		•	•
Instant record to USB		•	•
Instant record to HDD		•	•
Timer record from programme guide (EPG)		•	•
HDMI	x3	x3	x3
HDMI ARC	•	•	•
Coaxial Audio Output			
Optical Audio Output	•	•	•
USB	x2	x2	x2
Headphone socket	•	•	•
Mini AV input	•		
RCA input			
Wall mounted VESA 100mm x 100mm	•	•	•
On / Off switch	•	•	•
240v operation	•	•	•
12v operation	•	•	•
24v operation	•	•	•
Weight (with stand)	2.7 kg	2.9 kg	3.36 kg
Dimensions (w / h / d) mm (without stand)	448 x 257 x 46 mm	488.8 x 290 x 44 mm	540.4 x 317.6 x 44 mm
Dimensions (w / h / d) mm (with stand)	448 x 278 x 46 mm	488.8 x 311 x 44 mm	540.4 x 338.6 x 44 mm
Remote control / power / cables / instructions	•	•	•
Finish	Black	Black	Black

astex[®]

CATALOGUE**24**

Television | Audio | Navigation | Wi-Fi



Designed for your
Mobile Life



astex[®]
CATALOGUE**24**

Avtex Ltd

Calon Point, No.1 Fountain Lane, St. Mellons Business Park, Cardiff, CF3 0FE UK

avtex.co.uk